

YOUR RIDE IS HERE.



Corridor Cities Transitway

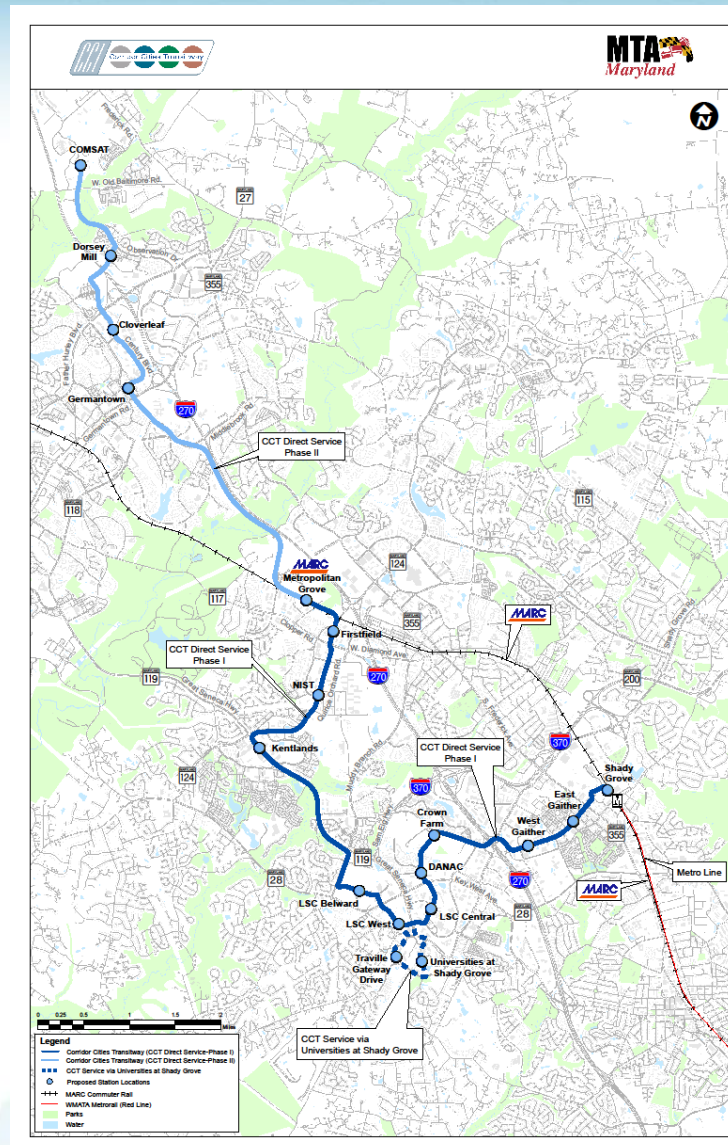
Presented to:
North Potomac Citizens Association

February 25, 2015



Locally Preferred Alternative

- Governor O'Malley: May 11, 2012
- Mode: Bus Rapid Transit
 - 2 lanes
 - Dedicated guideway
 - Shared use path (SP-66)
- 16 mile alignment
 - Metropolitan Grove to Shady Grove (9 mile Phase I)
- Maintenance Facility: Near Metropolitan Grove
- Phased Construction



What is BRT?

LRT on Rubber Tires

- Modern, low floor vehicles
- Multiple door entry
- Advanced fare payment
- Varied runningways
- Stations
- Signal priority/preemption
- Real-time transit info
- High frequency service
- Operates on intervals, not a timetable
- Branded – recognizable and distinct



Agency Coordination

- Federal Transit Administration
- State Highway Administration
- Montgomery County Department of Transportation
- M-NCPPC
- WMATA
- City of Gaithersburg
- City of Rockville
- DOC - NIST
- MDE

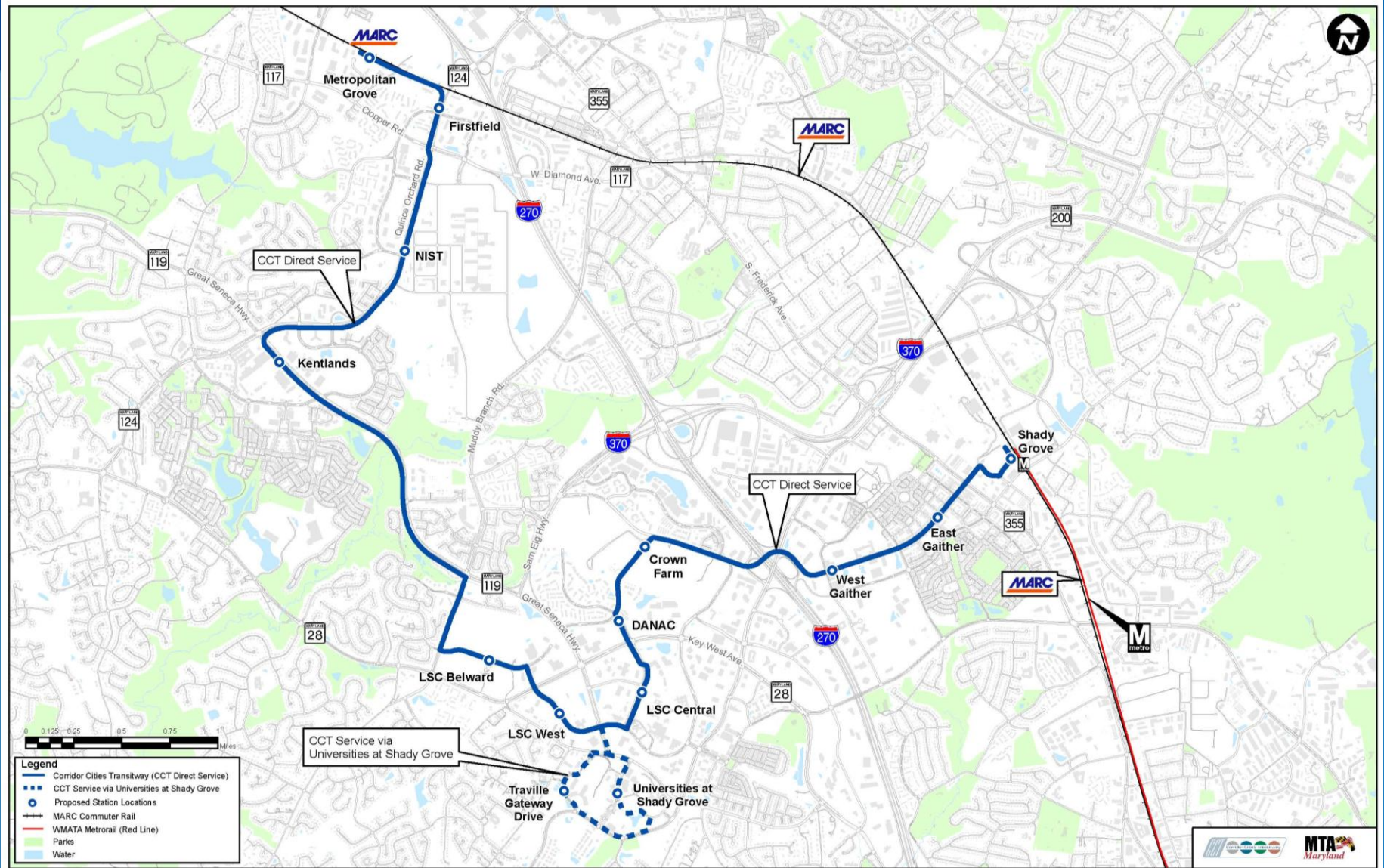


Current Schedule

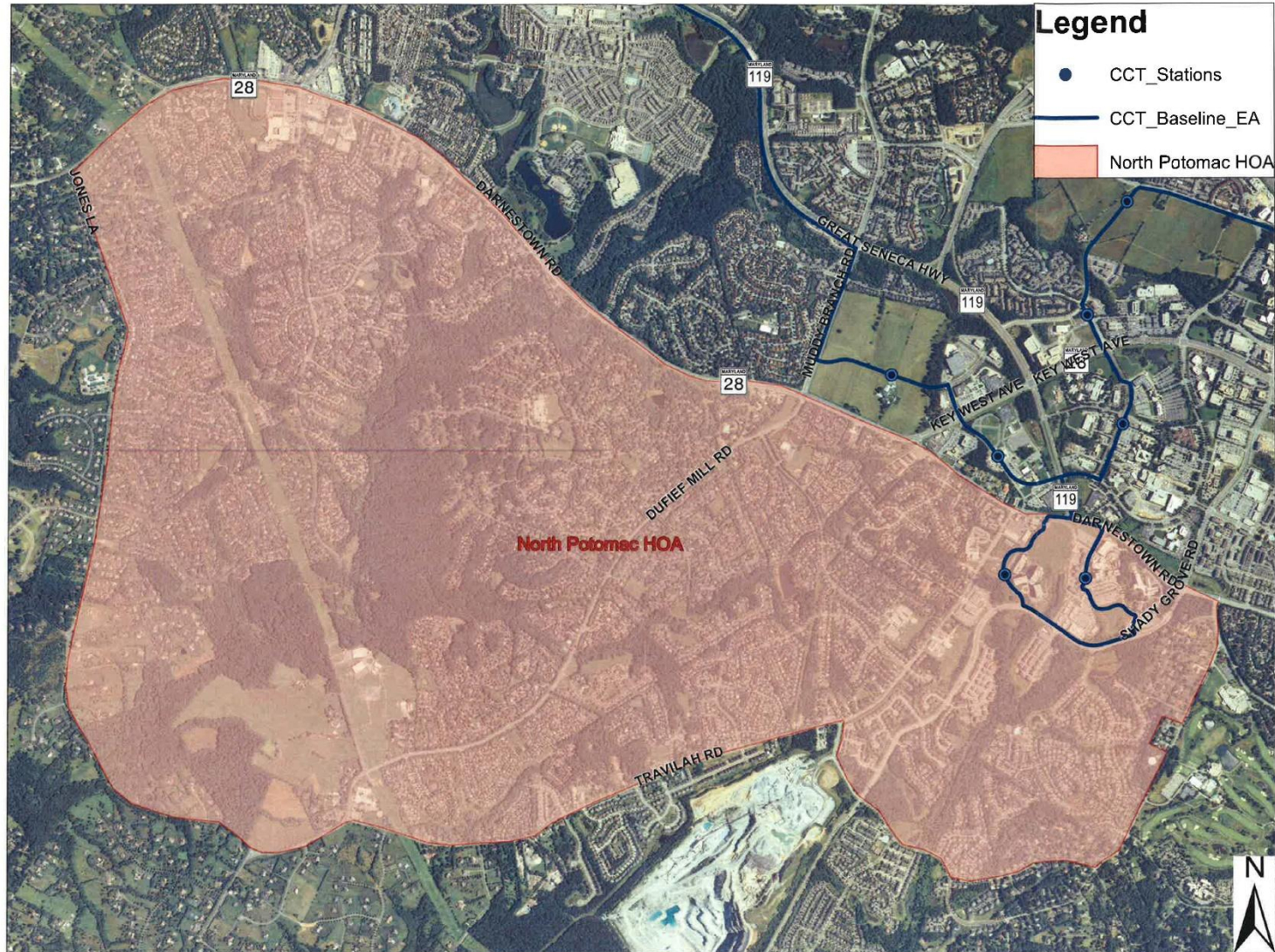
- August 2014 – Draft EA and 15% Design Submittal
- August 2015 – 30% Design Submittal
- Fall 2015 – FONSI
- Winter 2015/2016 – Initiate design activities
- Winter 2016/2017 – Begin Right-of Way Acquisition/
Permitting/ Agreements
- Spring 2018 – Begin Construction
- 2021 – Begin Service



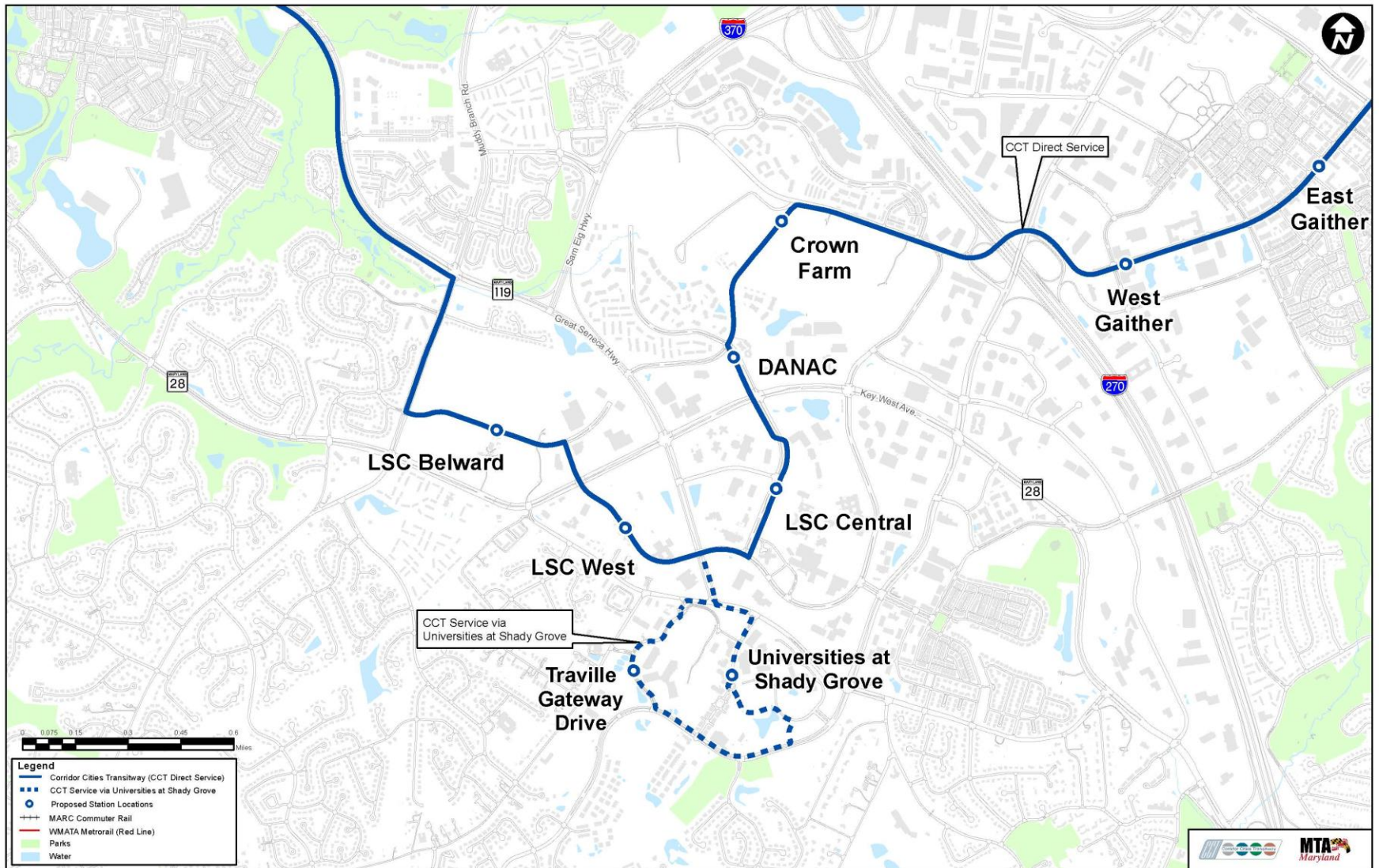
Phase I - Project Map



NP HOA Map



Phase I - Project Map



Operations

- CCT Direct Service and CCT via USG
- Ridership
 - 36,000 trips per day in 2035
- Bus Fleet
 - 60 ft articulated, low floor, clean diesel hybrid-electric
 - 39 total buses required for Design Year
- Operating hours
 - Similar to Metro hours
 - Begin before Metro and end after Metro



Operations

- CCT Direct Service
- Route
 - CCT Direct Service will run from Metropolitan Grove to Shady Grove
 - 12 Stations
- Design year headways
 - 3.5 minutes peak
 - 6 minutes mid-day
 - 10 minutes off-peak
 - 10 minutes weekends



Operations

- CCT Service via USG
- Route
 - CCT via USG service will run from Metropolitan Grove to Shady Grove
 - Stops at all CCT Direct Service Stations plus the University and Traville Gateway Drive
- Design year headways
 - 15 minutes peak
 - 30 minutes mid-day and off-peak



Operations

- Ride On Service in CCT Corridor
 - Minor modifications to existing routes for connectivity to CCT Stations
 - Average Service Frequency
 - AM Peak 20-30 minutes
 - Midday 30 minutes
 - PM Peak 20-30 minutes

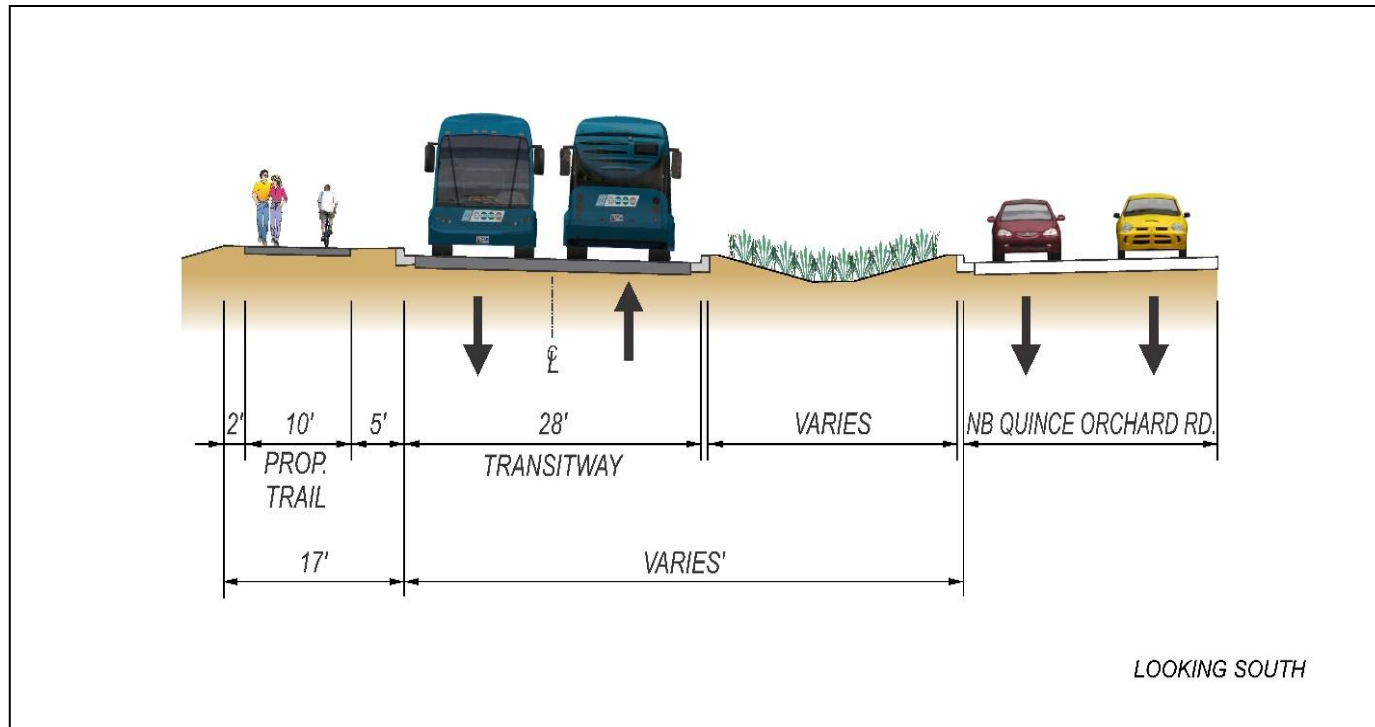


Transitway Alignment

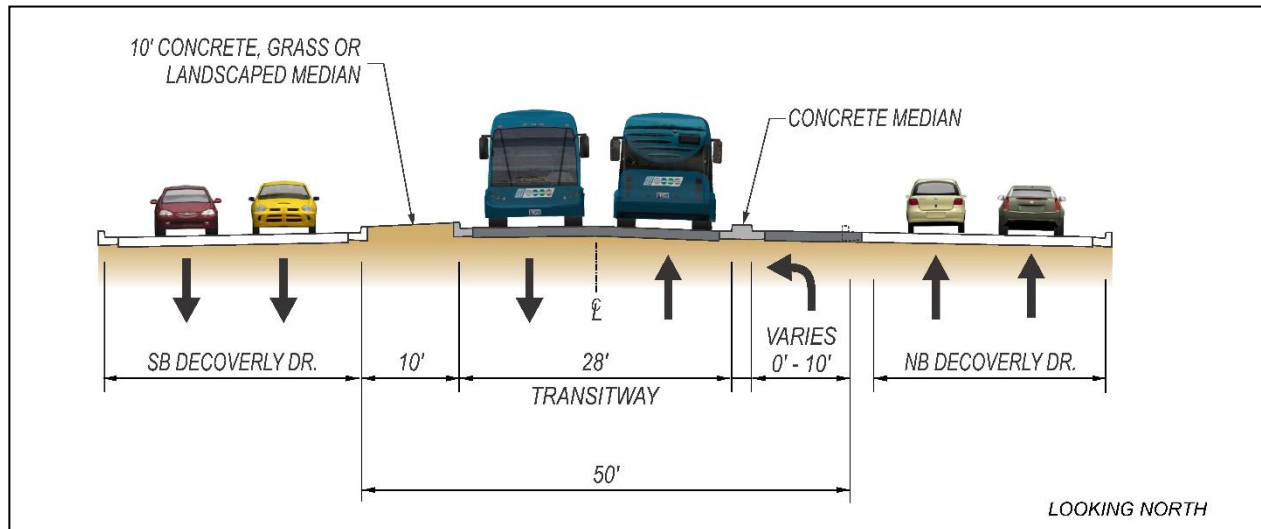
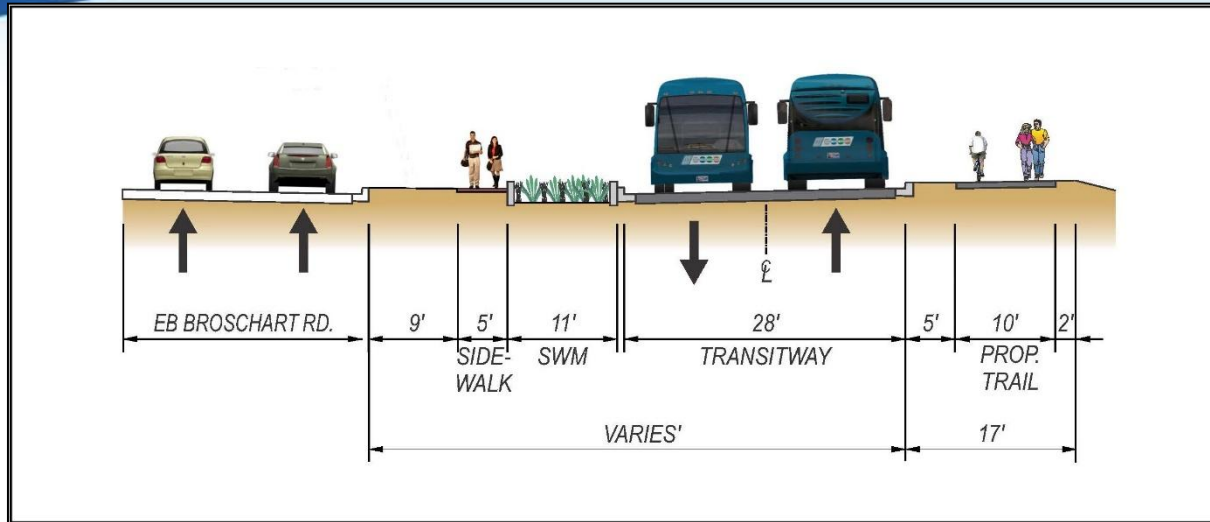
- 9 miles dedicated right-of-way
- Side running along SHA and Montgomery County roadways
- Median running on Montgomery County and City of Rockville roadways
- Mixed traffic along CCT via Universities of Shady Grove (USG) Service



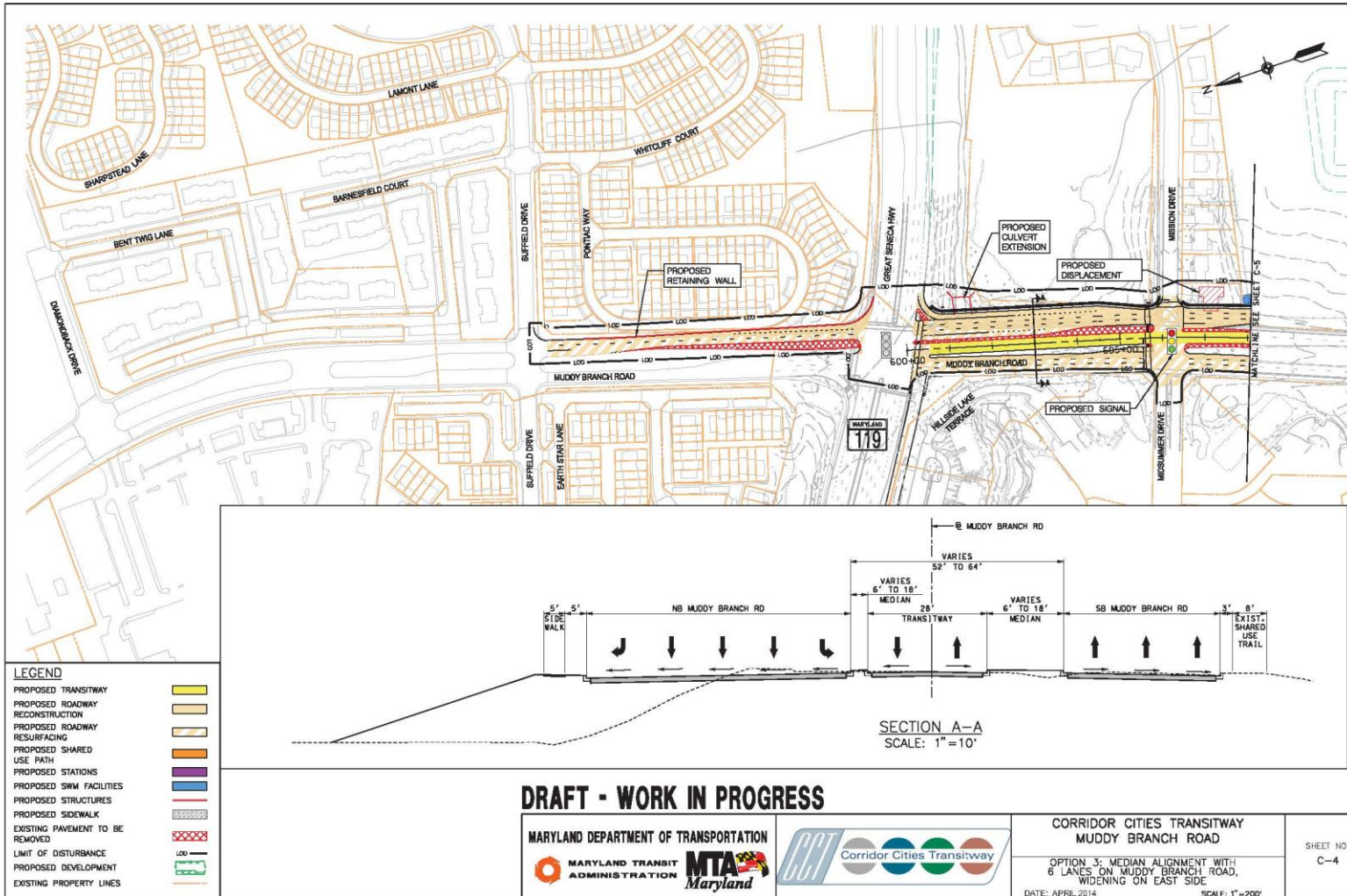
CCT Typical Sections



CCT Typical Sections



Muddy Branch Road



Structures

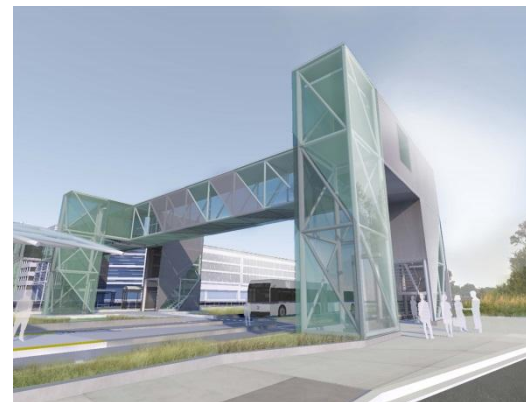
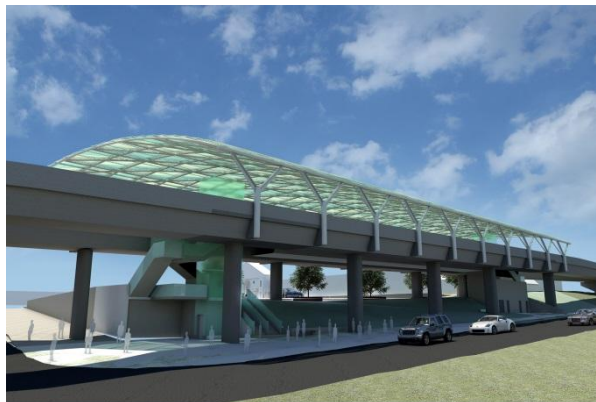
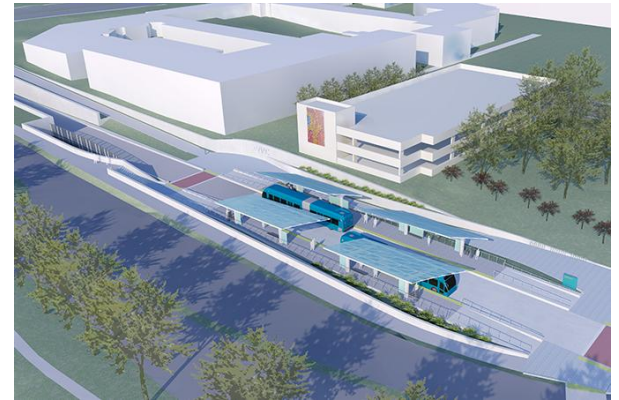
- Four transitway bridges
 - Clopper Road and Quince Orchard Road
 - Great Seneca Highway and Main Street (including Kentlands aerial station)
 - Muddy Branch
 - Fields Road, I-270, and Shady Grove Road
- Underpass of Key West Avenue



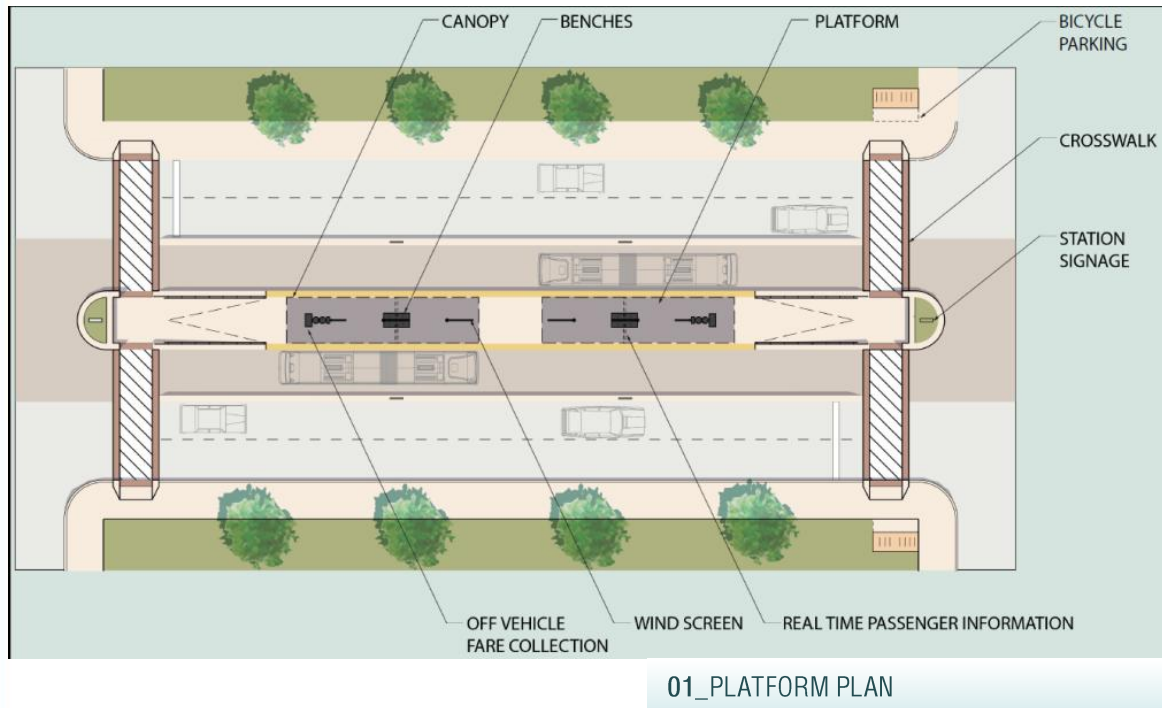
Stations and Architecture

System-wide Architecture

- Create system-wide architectural scheme for stations that symbolizes premium BRT



Prototype Station Plan



- Platforms - 150' X 18'
- Entrances - Primary & Secondary
- Canopy - 60% coverage
- Amenities – ticketing, benches, etc.

Station Concept: Surface

Helix

- Contextual Influence: Bioscience
- Helix as Generative Form
- Translucent Canopy
- Tree Structure
 - Concrete Column
 - Steel Frame

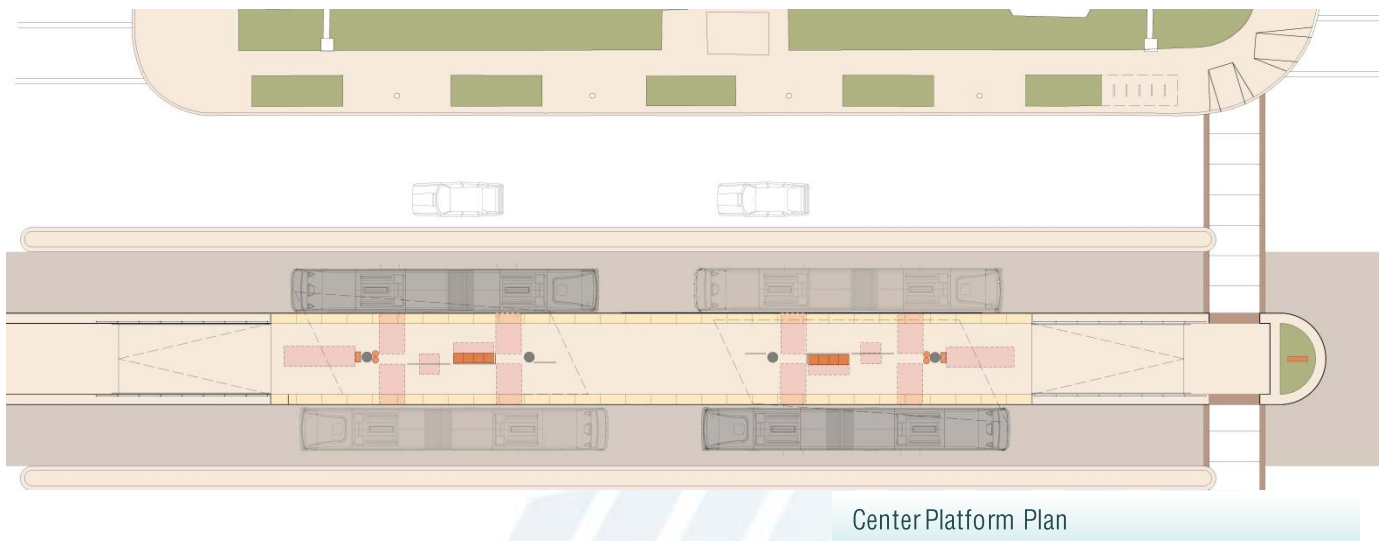
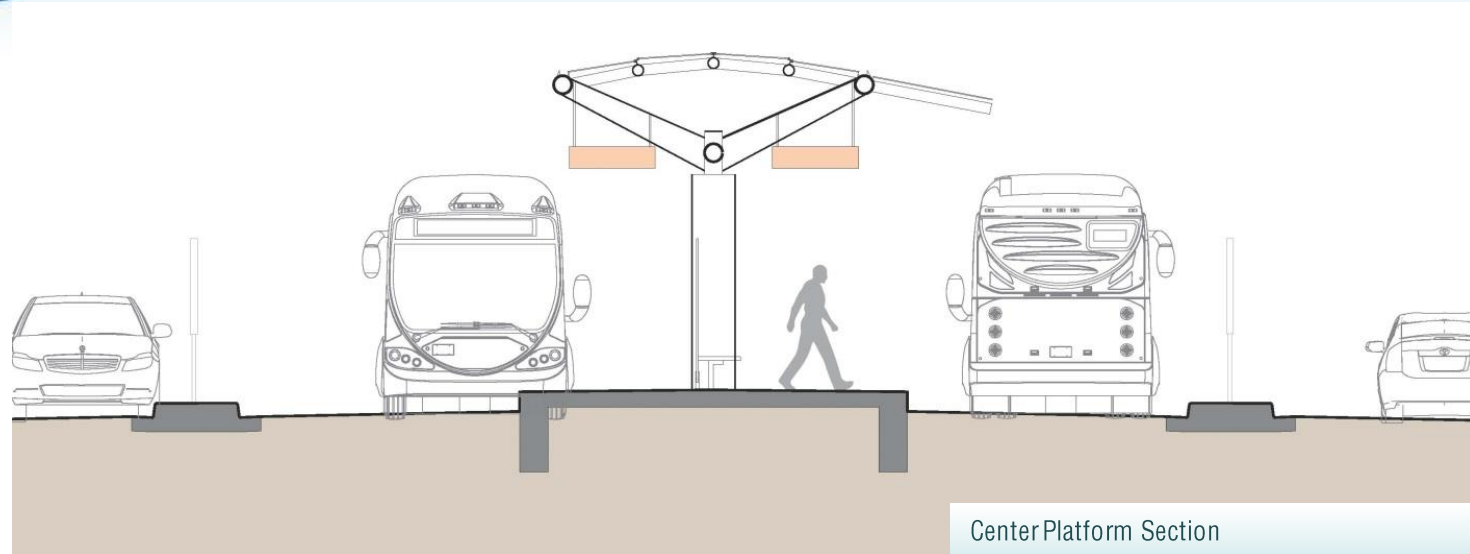


EAST GAITHER STATION
AERIAL VIEW

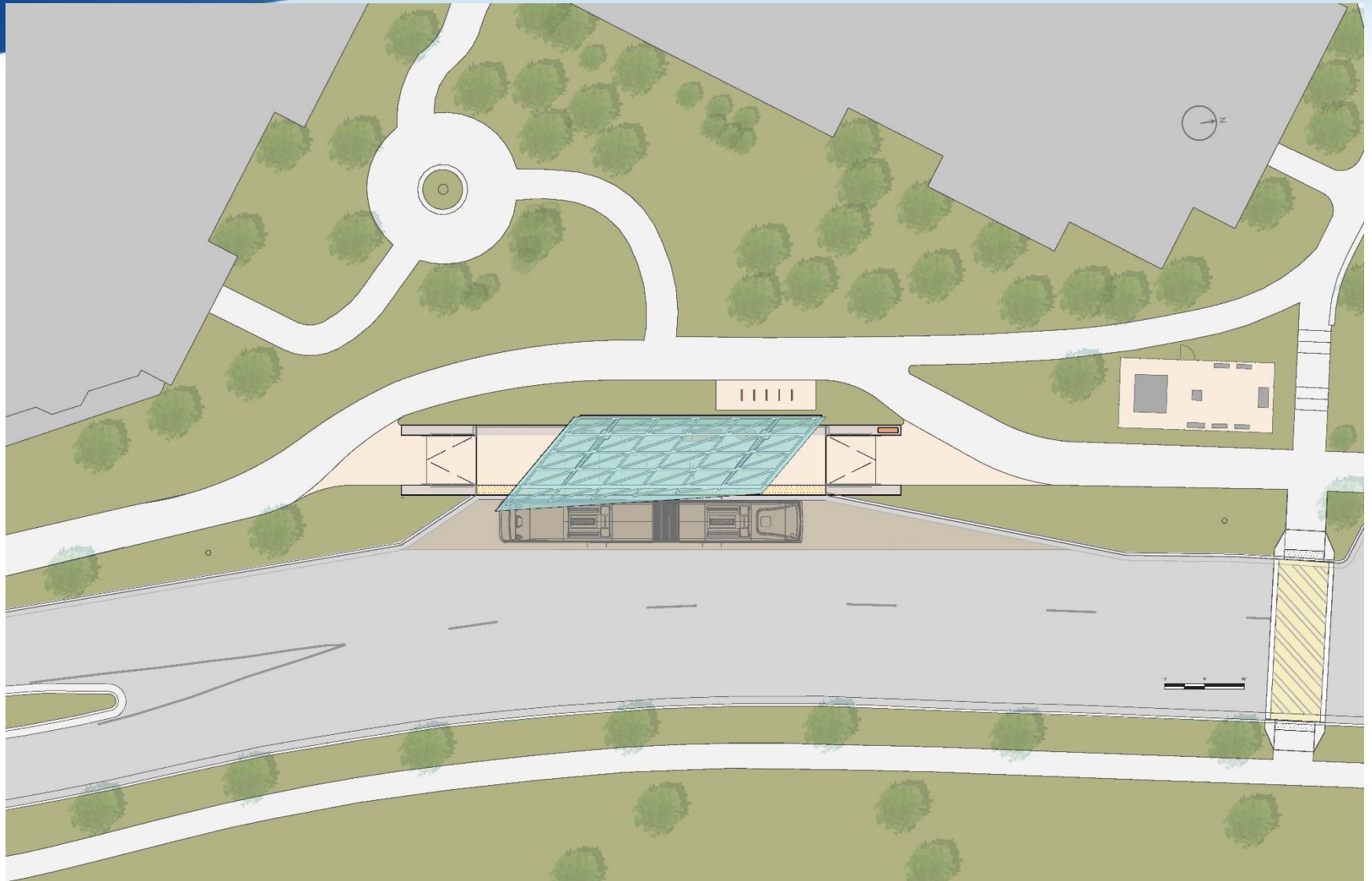


EAST GAITHER STATION
PLATFORM VIEW

Station Concept: Surface



USG Station Site Plan



USG Station



UNIVERSITIES AT SHADY GROVE STATION
AERIAL VIEW



UNIVERSITIES AT SHADY GROVE STATION
PLATFORM VIEW

Operations and Maintenance Facility

- Site
- Roadways
- Watkins Mill
- Impound Lot
- MVA



Systems

- **Safety & Security**

- On-board silent alarm
- On-board CCTV
- On-board voice monitoring
- Station CCTV
- Station Emergency Blue Phones

- **Passenger Information**

- Real-time passenger information signs @ stations
- Real-time passenger information via hand-held devices
- Passenger Announcement via Station Public Address system
- On-Board passenger announcements and stop announcements

Follow-up Questions

Rick Kiegel

MTA Office of Planning and Programming

410-767-1380

rkiiegel@mta.maryland.gov